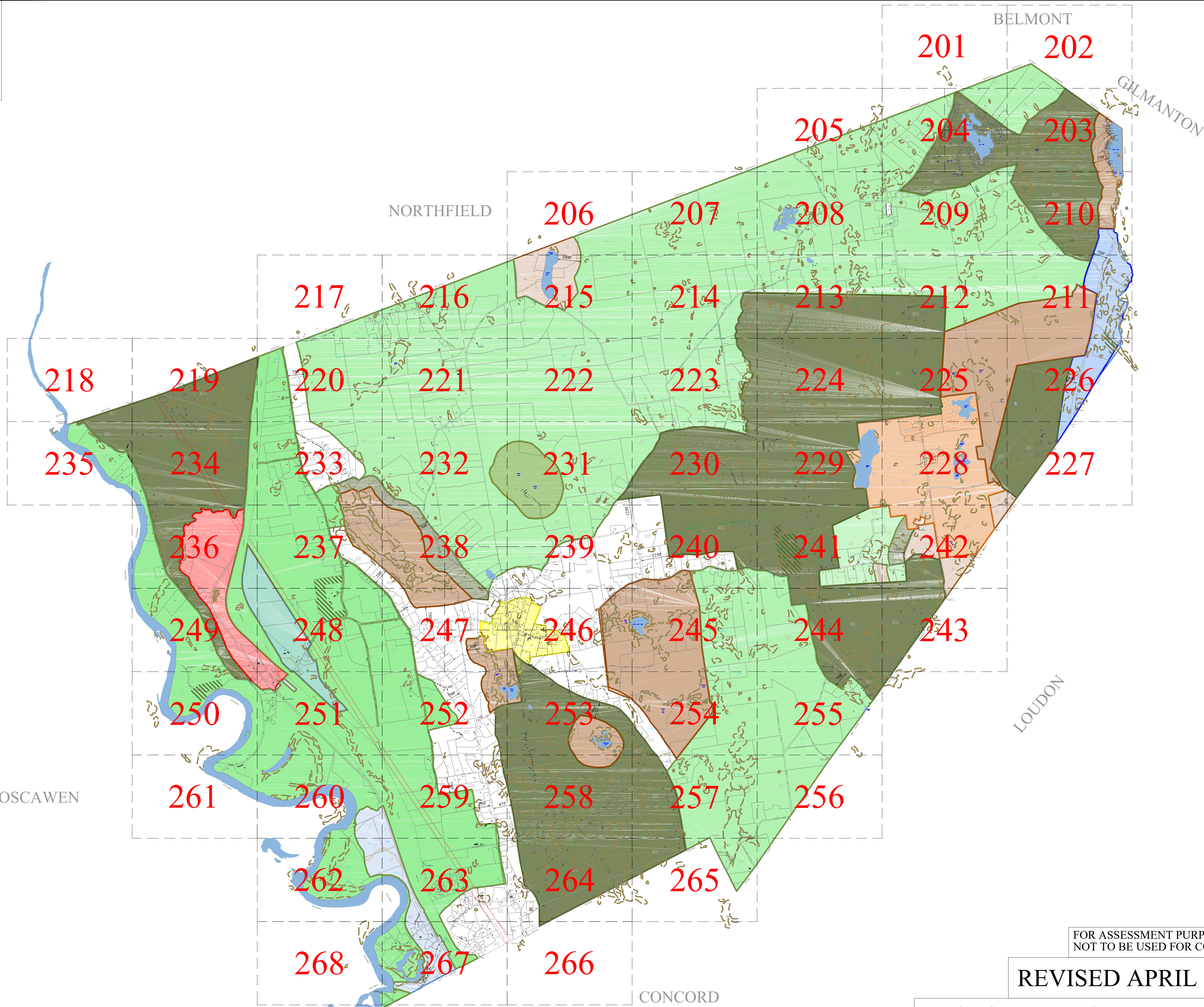


Town of CANTERBURY

Merrimack County
New Hampshire

LEGEND

Lot-Sub	12-1
Acreage	200 AcS
S-Survey C-Calculated	150.00'
Dimensions (Feet)	150.00'
Private & ROW Access	
River	
Wetland	
Lake or Pond	
Transmission Line	
Conservation Easement	
Exempt Property	
Town Owned Land	
Open Space	
Structure	
ZONING	
Residential	
Rural	
Agricultural-Conservation	
Commercial	
Industrial	
Natural Resource	
Center Historic District	
Shaker Historic Overlay District	
Shaker Village Museum Preservation District	
ROADS	
Interstates	
State Highways (Class I&II)	
Town Maintained (Class V)	
Unmaintained (Class VI)	
Private	
Discontinued	
Discontinued (Gates&Bars)	



FOR ASSESSMENT PURPOSES
NOT TO BE USED FOR CONVEYANCES

REVISED APRIL 1, 2025

THE HORIZONTAL DATUM IS THE NEW HAMPSHIRE STATE
PLANE COORDINATE SYSTEM, NAD 83.